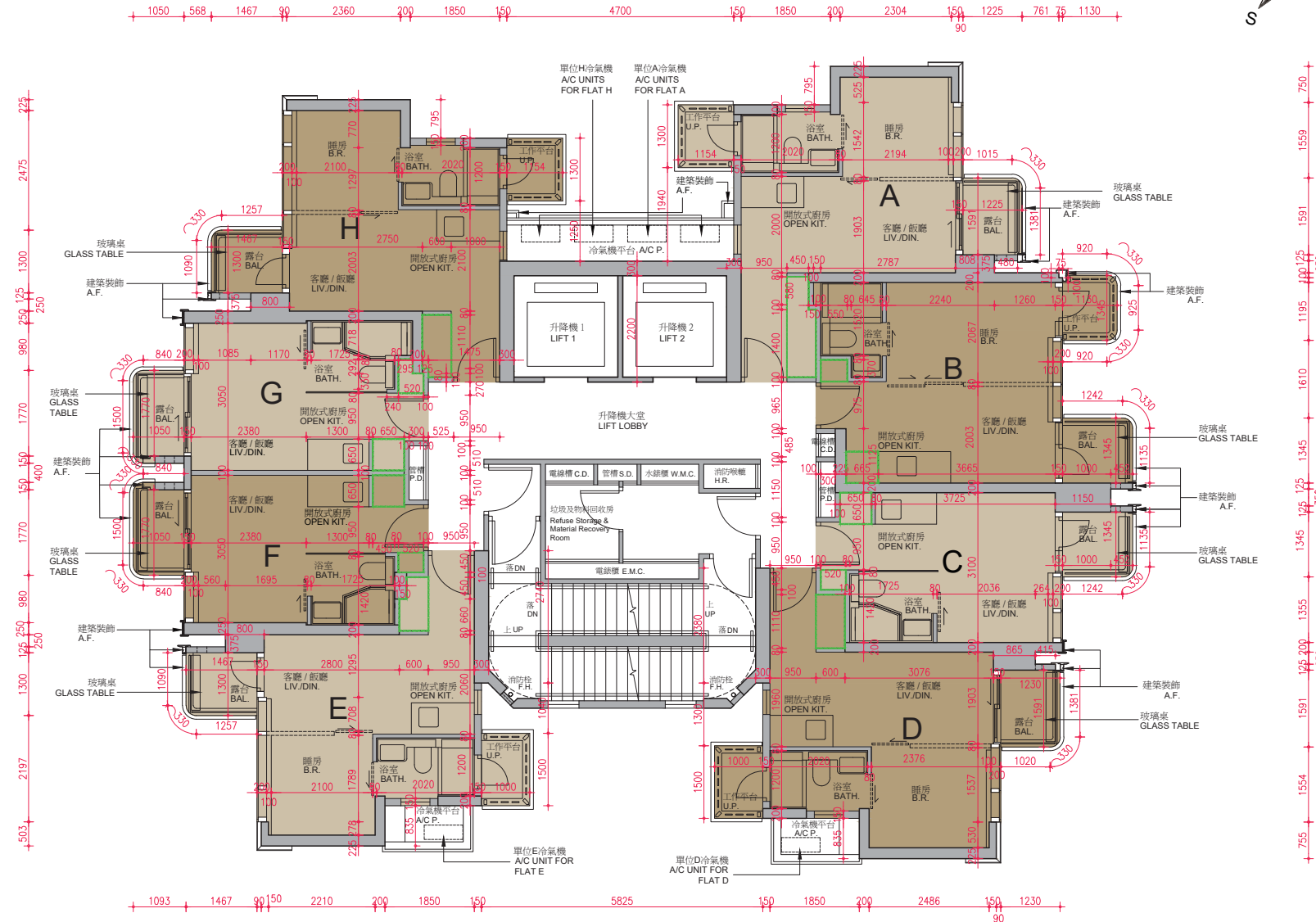


10 發展項目的住宅物業的樓面平面圖 FLOOR PLANS OF RESIDENTIAL PROPERTIES IN THE DEVELOPMENT

5樓-12樓、15樓-23樓及25樓-28樓平面圖
5/F-12/F, 15/F-23/F & 25/F-28/F Floor Plan



因住宅物業的較高樓層的結構牆的厚度遞減，較高樓層的內部面積，一般比較低樓層的內部面積稍大。

請參閱本售樓說明書第25頁為住宅物業樓面平面圖而設之備註及名詞及簡稱的圖例。

備註：
平面圖所列的數字為以毫米標示之建築結構尺寸。

The internal areas of the residential properties on the upper floors will generally be slightly larger than those on the lower floors because of the reducing thickness of the structural walls on the upper floors.

Please refer to page 25 of this sales brochure for the remarks and legends of the terms and abbreviations for the floor plans of residential properties.

Note:
The dimensions in floor plans are all structural dimensions in millimeter.

每個住宅物業 Each Residential Property	樓層 Floor	單位 Flat							
		A	B	C	D	E	F	G	H
層與層之間的高度 (毫米) Floor-to-Floor Height (mm)	5樓 -12樓、15樓 -23樓及 25樓 -27樓 5/F-12/F, 15/F-23/F & 25/F-27/F	3150	3150	3150	3150	3150	3150	3150	3150
	28樓 28/F	3350	3050, 3150, 3250, 3350	3050, 3150, 3350	3150	3350	3350	3350	3350
樓板 (不包括灰泥) 的厚度 (毫米) Thickness of Floor Slab (excluding plaster) (mm)	5樓 -12樓、15樓 -23樓及 25樓 -28樓 5/F-12/F, 15/F-23/F & 25/F-28/F	150	150	150	150	150	150	150	150