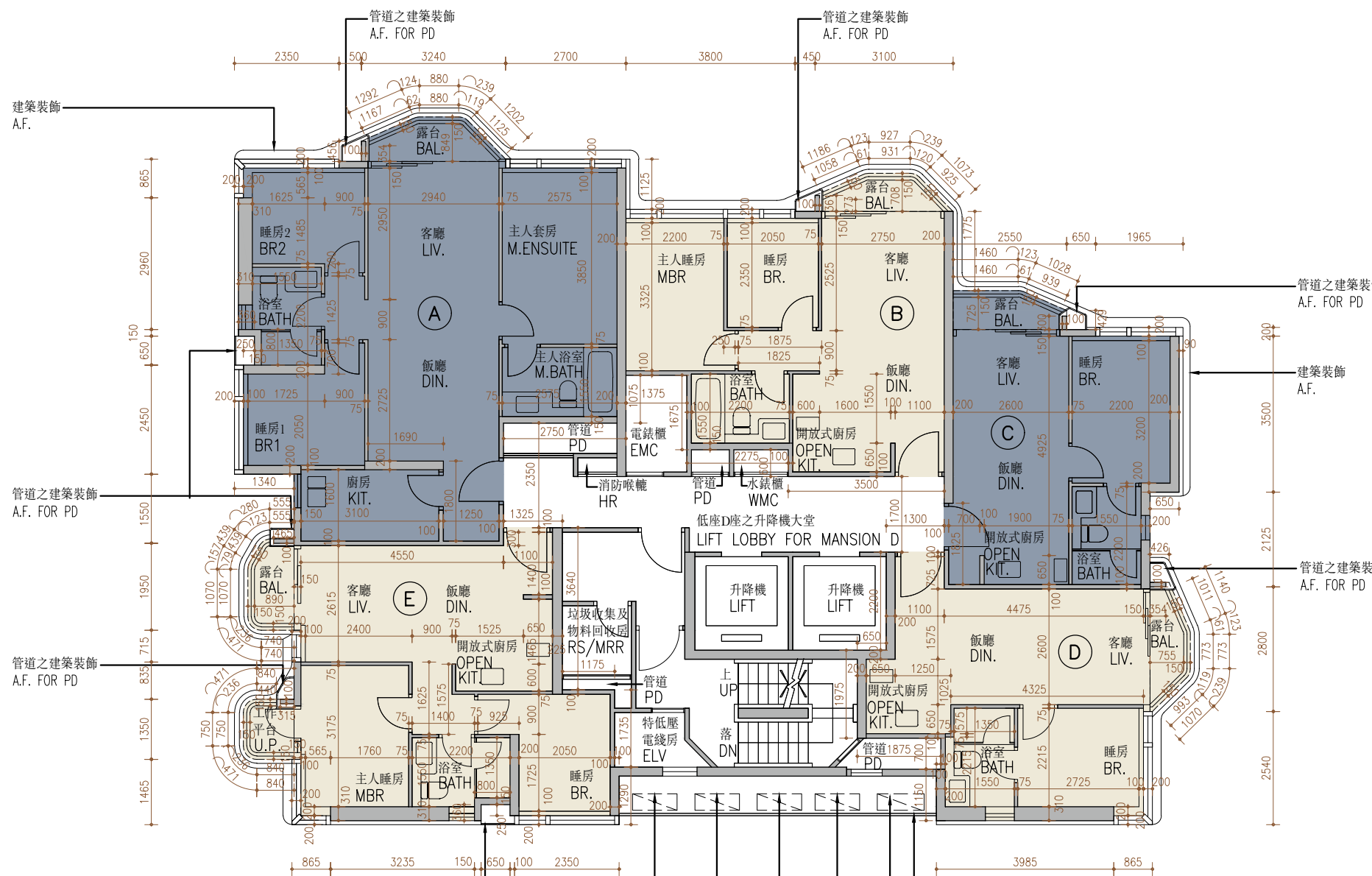


11 FLOOR PLANS OF RESIDENTIAL PROPERTIES IN THE PHASE

期數的住宅物業的樓面平面圖

Mansion D
低座D座

2/F-3/F
2樓至3樓



管道之建築裝飾
A.F. FOR PD
 低座D座下層E單位空調機室外機 #
A/C OUTDOOR UNIT FOR FLAT E BELOW FLOOR OF MANSION D #
 低座D座下層A單位空調機室外機
A/C OUTDOOR UNIT FOR FLAT A BELOW FLOOR OF MANSION D
 低座D座下層A單位空調機室外機 #
A/C OUTDOOR UNIT FOR FLAT A BELOW FLOOR OF MANSION D #
 空調機室外機平台
A/C OUTDOOR UNIT PLATFORM
 低座D座下層B單位空調機室外機 #
A/C OUTDOOR UNIT FOR FLAT B BELOW FLOOR OF MANSION D #
 低座D座下層C單位空調機室外機
A/C OUTDOOR UNIT FOR FLAT C BELOW FLOOR OF MANSION D

TWO AIR-CONDITIONERS OUTDOOR UNITS WILL BE INSTALLED WITH A DOUBLE DECK SYSTEM
兩部空調機室外機將會以雙層系統型式安裝

Scale : 0M/米 5M/米
比例 :

11

FLOOR PLANS OF RESIDENTIAL PROPERTIES IN THE PHASE

期數的住宅物業的樓面平面圖

	Mansion 低座	Floor 樓層	Flat 單位				
			A	B	C	D	E
The thickness of the floor slabs (excluding plaster) of each residential property (mm) 每個住宅物業的樓板(不包括灰泥)的厚度(毫米)	Mansion D 低座D座	2/F 2樓	150	150	150	150	150
The floor-to-floor height (refers to the height between the top surface of the structural slab of a floor and the top surface of the structural slab of its immediate upper floor) of each residential property (mm) 每個住宅物業的層與層之間的高度(指該樓層之石屎地台面與上一層石屎地台面之高度距離)(毫米)			3150, ~3150, ^3150, #3150	3150, ~3150, ^3150, #3150	3150, ~3150, ^3150, #3150	3150, ~3150, ^3150	3150, ~3150, ^3150
The thickness of the floor slabs (excluding plaster) of each residential property (mm) 每個住宅物業的樓板(不包括灰泥)的厚度(毫米)		3/F 3樓	150	150	150	150	150
The floor-to-floor height (refers to the height between the top surface of the structural slab of a floor and the top surface of the structural slab of its immediate upper floor) of each residential property (mm) 每個住宅物業的層與層之間的高度(指該樓層之石屎地台面與上一層石屎地台面之高度距離)(毫米)			3150, ~3150, ^3150, #3150	3150, ~3150, ^3150, #3150	3150, ~3150, ^3150, #3150	3150, ~3200, ^3450	3150, ~3150, ^3150

~ inclusive of the sunken depth of the sunken slab on the floor of this floor (50mm)

^ inclusive of the sunken depth of the sunken slab on the floor of this floor (300mm)

inclusive of the sunken depth of the sunken slab on the floor of this floor (350mm)

The internal areas of the residential properties on the upper floors will generally be slightly larger than those on the lower floors because of the reducing thickness of the structural walls on the upper floors. (Note: Not applicable for this Phase)

The dimensions in the floor plans are all structural dimensions in millimetre.

Please refer to page 25 of this sales brochure for legend for the terms and abbreviations shown on the floor plan.

~ 包括本層地台跌級樓板之跌級深度 (50毫米)

^ 包括本層地台跌級樓板之跌級深度 (300毫米)

包括本層地台跌級樓板之跌級深度 (350毫米)

因住宅物業的較高樓層的結構牆的厚度遞減，較高樓層的內部面積，一般比較低樓層的內部面積稍大。(備註：不適用於本期數)

樓面平面圖之尺規所列數字為以毫米標示之建築結構尺寸。

樓面平面圖中顯示之名詞及簡稱之圖例請參閱本售樓說明書第25頁。