

19

CROSS-SECTION PLAN OF BUILDING IN THE PHASE

期數中的建築物的橫截面圖

TOWER 1A & TOWER 1B

第1A座及第1B座

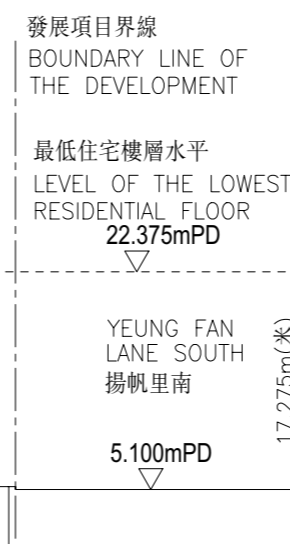
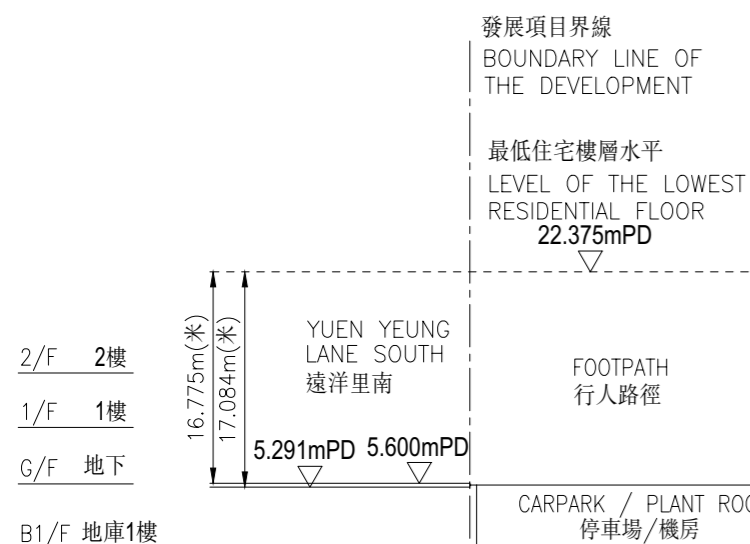
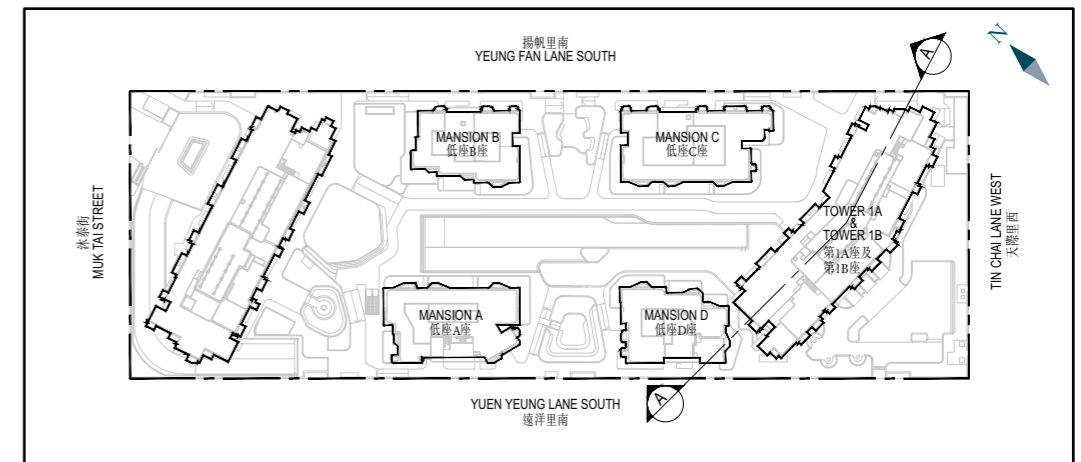
CROSS-SECTION PLAN A-A

橫截面圖A-A

頂層天台 TOP ROOF		發電機/機電樓層 GENSET ROOM FLOOR / PLANT ROOM FLOOR		上層天台 UPPER ROOF		天台 ROOF	
38/F	38樓	RESIDENTIAL UNIT		住宅單位			
37/F	37樓	RESIDENTIAL UNIT		住宅單位			
36/F	36樓	RESIDENTIAL UNIT		住宅單位			
35/F	35樓	RESIDENTIAL UNIT		住宅單位			
33/F	33樓	RESIDENTIAL UNIT		住宅單位			
32/F	32樓	RESIDENTIAL UNIT		住宅單位			
31/F	31樓	RESIDENTIAL UNIT		住宅單位			
30/F	30樓	RESIDENTIAL UNIT		住宅單位			
29/F	29樓	RESIDENTIAL UNIT		住宅單位			
28/F	28樓	RESIDENTIAL UNIT		住宅單位			
27/F	27樓	RESIDENTIAL UNIT		住宅單位			
26/F	26樓	RESIDENTIAL UNIT		住宅單位			
25/F	25樓	RESIDENTIAL UNIT		住宅單位			
23/F	23樓	RESIDENTIAL UNIT		住宅單位			
22/F	22樓	RESIDENTIAL UNIT		住宅單位			
21/F	21樓	RESIDENTIAL UNIT		住宅單位			
20/F	20樓	RESIDENTIAL UNIT		住宅單位			
19/F	19樓	RESIDENTIAL UNIT		住宅單位			
18/F	18樓	RESIDENTIAL UNIT		住宅單位			
17/F	17樓	RESIDENTIAL UNIT		住宅單位			
16/F	16樓	RESIDENTIAL UNIT		住宅單位			
15/F	15樓	RESIDENTIAL UNIT		住宅單位			
12/F	12樓	RESIDENTIAL UNIT		住宅單位			
11/F	11樓	RESIDENTIAL UNIT		住宅單位			
10/F	10樓	RESIDENTIAL UNIT		住宅單位			
9/F	9樓	RESIDENTIAL UNIT		住宅單位			
8/F	8樓	RESIDENTIAL UNIT		住宅單位			
7/F	7樓	RESIDENTIAL UNIT		住宅單位			
6/F	6樓	RESIDENTIAL UNIT		住宅單位			
5/F	5樓	RESIDENTIAL UNIT		住宅單位			
3/F	3樓	PLANT ROOM 機房	RESIDENTIAL UNIT	住宅單位			
TRANSFER STRUCTURE 結構轉換層							
COVERED LANDSCAPE AREA 園林地帶		COMMUNAL SKY GARDEN 空中花園		COVERED LANDSCAPE AREA 園林地帶			
RECREATIONAL FACILITIES 康樂設施		RECREATIONAL FACILITIES 康樂設施		RECREATIONAL FACILITIES 康樂設施			
LIFT LOBBY 升降機大堂		LIFT LOBBY 升降機大堂		LIFT LOBBY 升降機大堂		PLANT ROOM 機房	
CARPARK / PLANT ROOM 停車場/機房		LIFT LOBBY 升降機大堂		CARPARK 停車場		LIFT LOBBY 升降機大堂	
CARPARK / PLANT ROOM 停車場/機房		LIFT LOBBY 升降機大堂		LIFT LOBBY 升降機大堂		PLANT ROOM 機房	

KEY PLAN

索引圖



▽ Height in metres above the Hong Kong Principal Datum (HKPD).
香港主水平基準以上高度(米)。

----- Dotted line denotes the level of the lowest residential floor of the building.

虛線為該建築物最低住宅樓層水平。

Remark: This cross-section plan is not drawn to scale.

備註：此橫截面圖並非按照比例繪圖。

The part of Yuen Yeung Lane South adjacent to the Tower 1A & Tower 1B is 5.291 metres to 5.600 metres above the Hong Kong Principal Datum.

毗連第1A座及第1B座的一段遠洋里南為香港主水平基準以上5.291米至5.600米。

The part of Yeung Fan Lane South adjacent to the Tower 1A & Tower 1B is 5.100 metres above the Hong Kong Principal Datum.

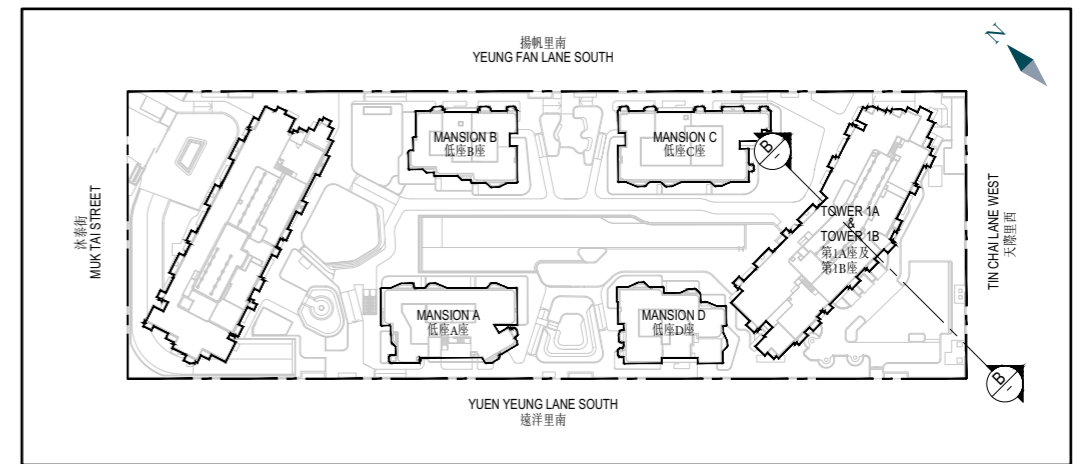
毗連第1A座及第1B座的一段揚帆里南為香港主水平基準以上5.100米。

TOWER 1A & TOWER 1B 第1A座及第1B座

CROSS-SECTION PLAN B-B 橫截面圖B-B



KEY PLAN 索引圖



最低住宅樓層水平
LEVEL OF THE LOWEST
RESIDENTIAL FLOOR

22.375mPD

16.925m(米)
FOOTPATH 行人路徑
5.450mPD

2/F 2樓

1/F 1樓

G/F 地下

B1/F 地庫1樓

最低住宅樓層水平
LEVEL OF THE LOWEST
RESIDENTIAL FLOOR

22.375mPD

發展項目界線
BOUNDARY LINE OF
THE DEVELOPMENT

TIN CHAI
LANE WEST
天際里西
5.194mPD 5.384mPD

16.991m(米)
17.181m(米)

▽ Height in metres above the Hong Kong Principal Datum (HKPD).
香港主水平基準以上高度(米)。

----- Dotted line denotes the level of the lowest residential floor of the building.
虛線為該建築物最低住宅樓層水平。

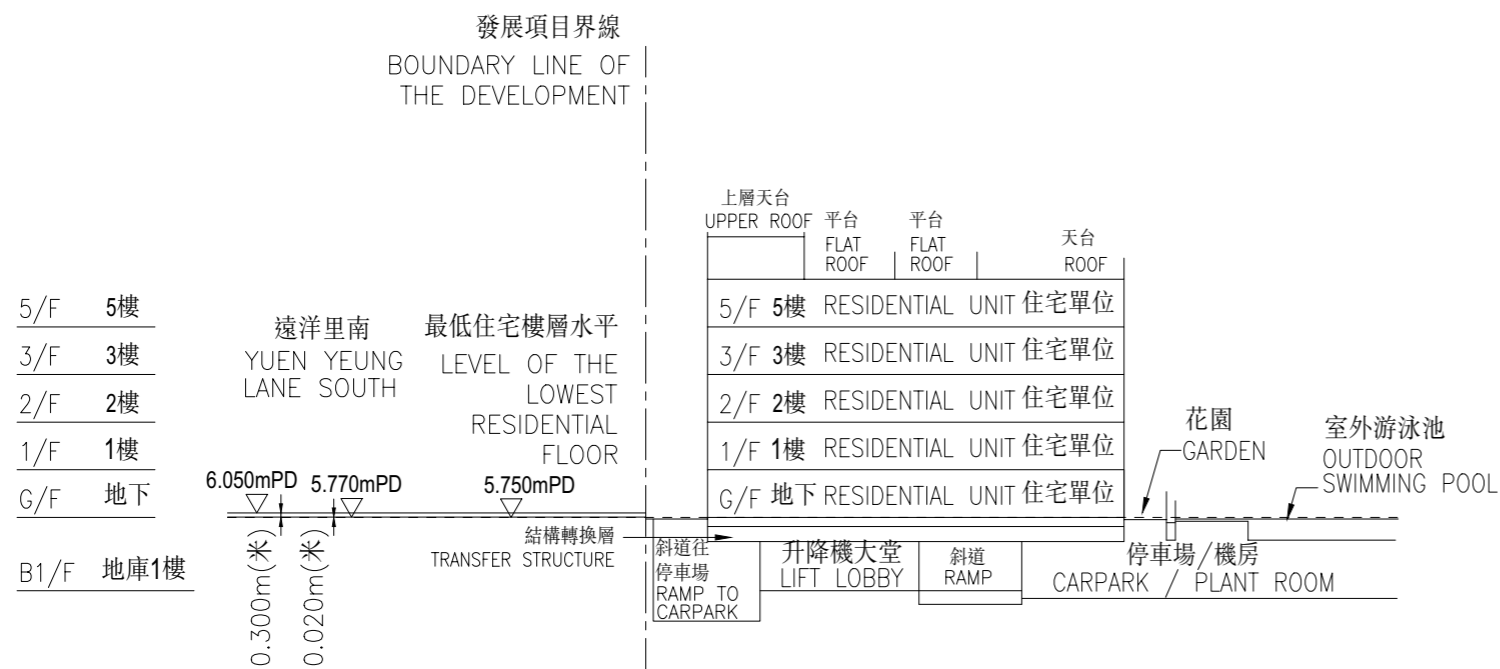
Remark: This cross-section plan is not drawn to scale.
備註：此橫截面圖並非按照比例繪圖。

The part of footpath adjacent to the Tower 1A & Tower 1B is 5.450 metres above the Hong Kong Principal Datum.
毗連第1A座及第1B座的一段行人路徑為香港主水平基準以上5.450米。

The part of Tin Chai Lane West adjacent to the Tower 1A & Tower 1B is 5.194 metres to 5.384 metres above the Hong Kong Principal Datum.
毗連第1A座及第1B座的一段天際里西為香港主水平基準以上5.194米至5.384米。

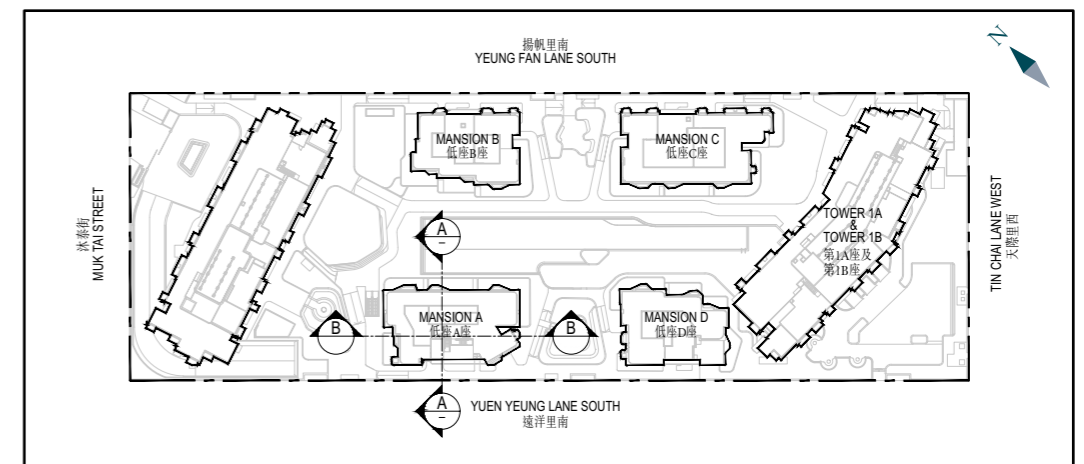
MANSION A - CROSS-SECTION PLAN A-A

低座A座 - 橫截面圖A-A



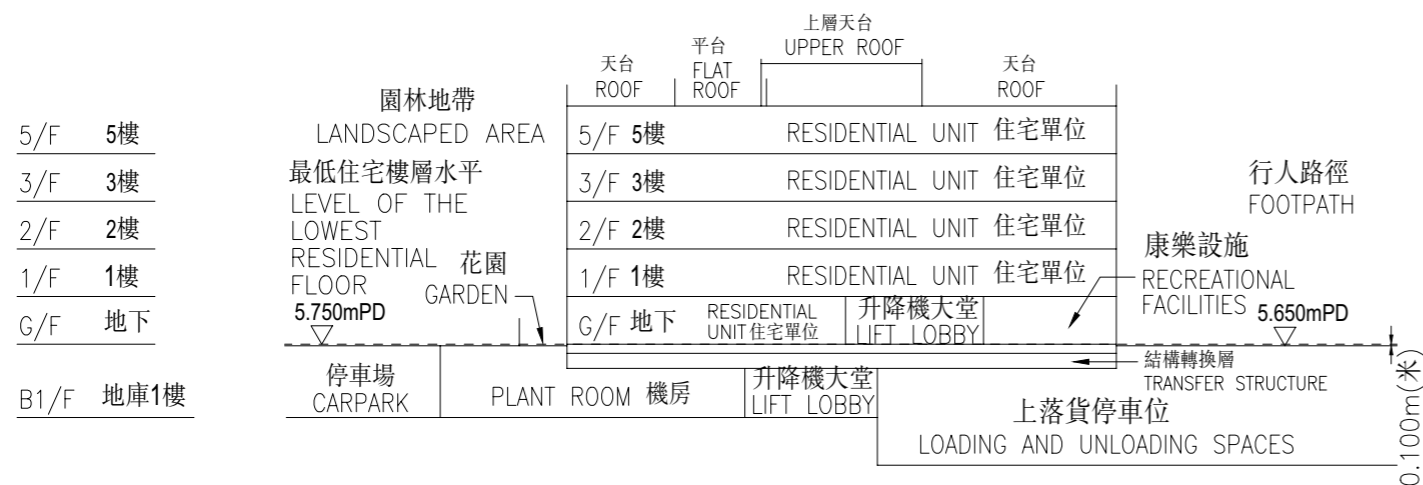
KEY PLAN

索引圖



MANSION A - CROSS-SECTION PLAN B-B

低座A座 - 橫截面圖B-B



▽ Height in metres above the Hong Kong Principal Datum (HKPD).
香港主水平基準以上高度(米)。

----- Dotted line denotes the level of the lowest residential floor of the building.
虛線為該建築物最低住宅樓層水平。

Remark: This cross-section plan is not drawn to scale.
備註：此橫截面圖並非按照比例繪圖。

The part of Yuen Yeung Lane South adjacent to Mansion A is 5.770 metres to 6.050 metres above the Hong Kong Principal Datum.

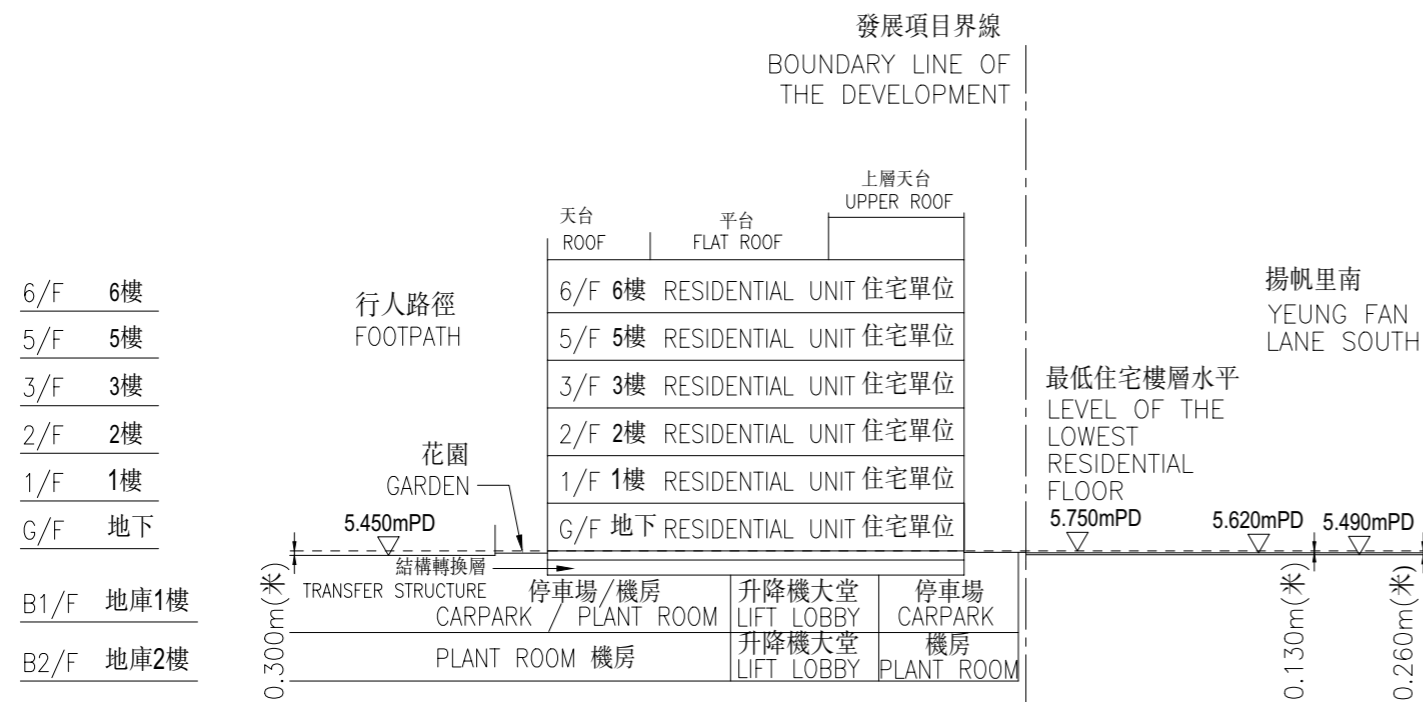
毗連低座A座的一段遠洋里南為香港主水平基準以上5.770米至6.050米。

The part of footpath adjacent to Mansion A is 5.650 metres above the Hong Kong Principal Datum.

毗連低座A座的一段行人路徑為香港主水平基準以上5.650米。

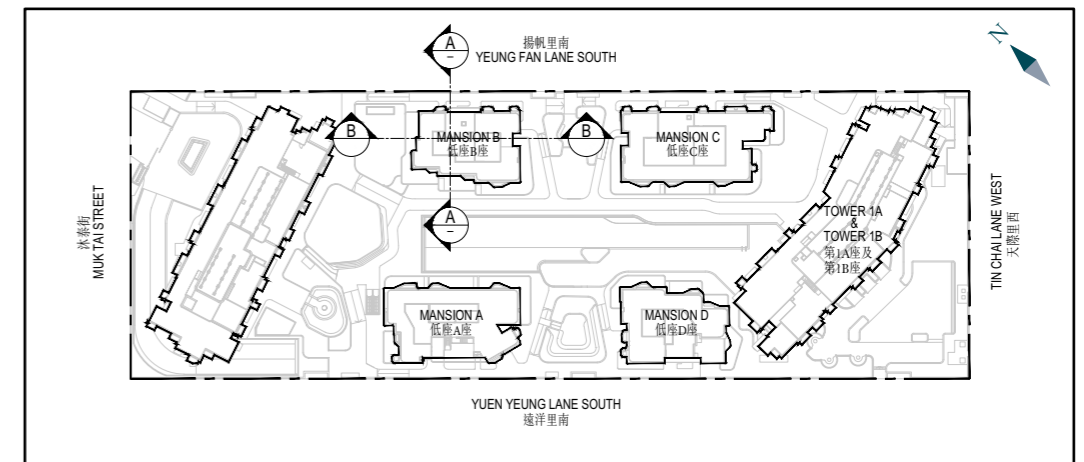
MANSION B - CROSS-SECTION PLAN A-A

低座B座 - 橫截面圖A-A



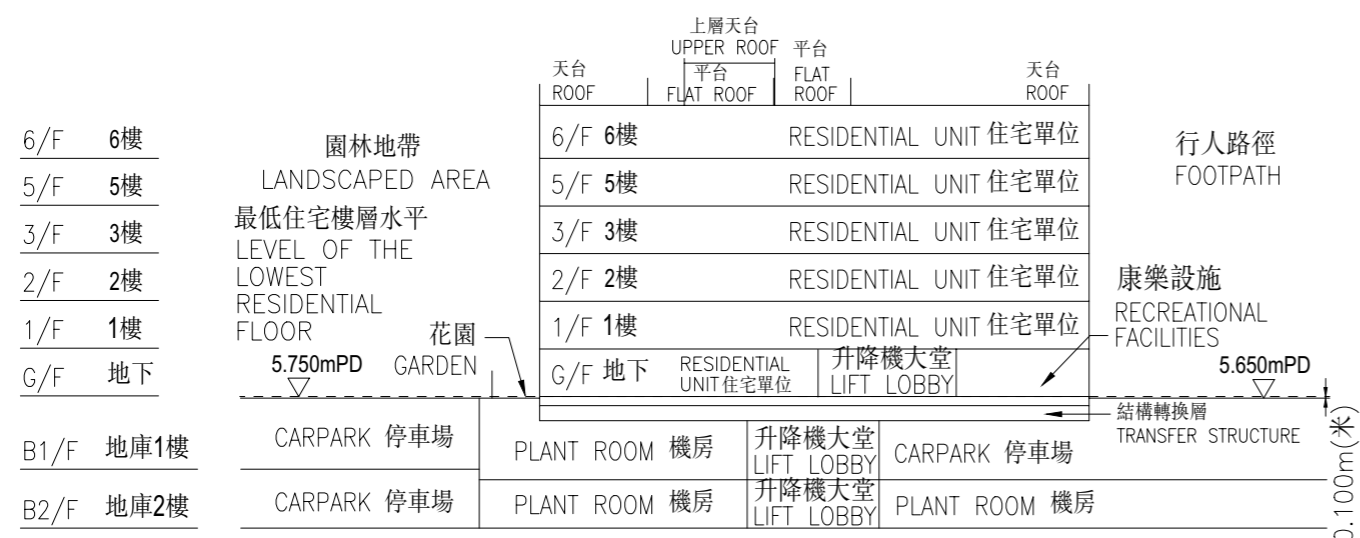
KEY PLAN

索引圖



MANSION B - CROSS-SECTION PLAN B-B

低座B座 - 橫截面圖B-B



▽ Height in metres above the Hong Kong Principal Datum (HKPD).

香港主水平基準以上高度(米)。

----- Dotted line denotes the level of the lowest residential floor of the building.

虛線為該建築物最低住宅樓層水平。

Remark: This cross-section plan is not drawn to scale.

備註：此橫截面圖並非按照比例繪圖。

The part of Yeung Fan Lane South adjacent to Mansion B is 5.490 metres to 5.620 metres above the Hong Kong Principal Datum.

毗連低座B座的一段揚帆里南為香港主水平基準以上5.490米至5.620米。

The two parts of footpath adjacent to Mansion B are 5.450 metres and 5.650 metres above the Hong Kong Principal Datum respectively.

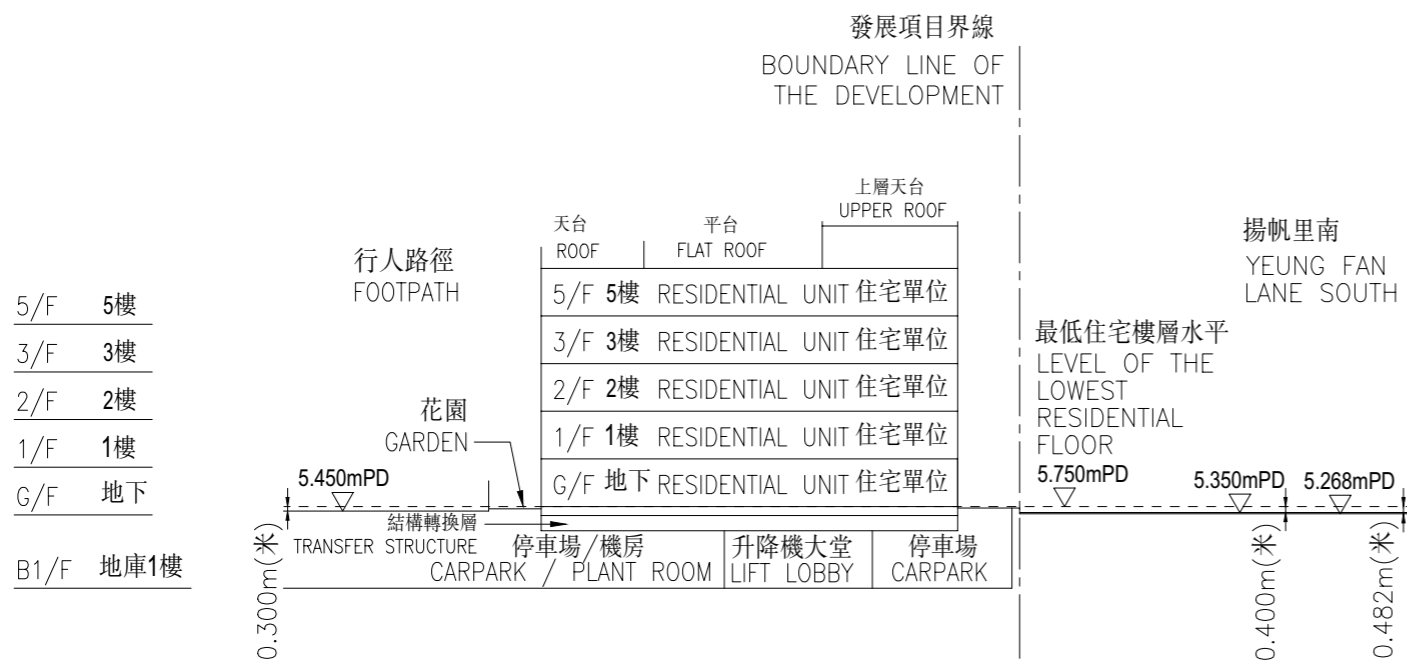
毗連低座B座的兩段行人路徑分別為香港主水平基準以上5.450米及5.650米。

19

CROSS-SECTION PLAN OF BUILDING IN THE PHASE 期數中的建築物的橫截面圖

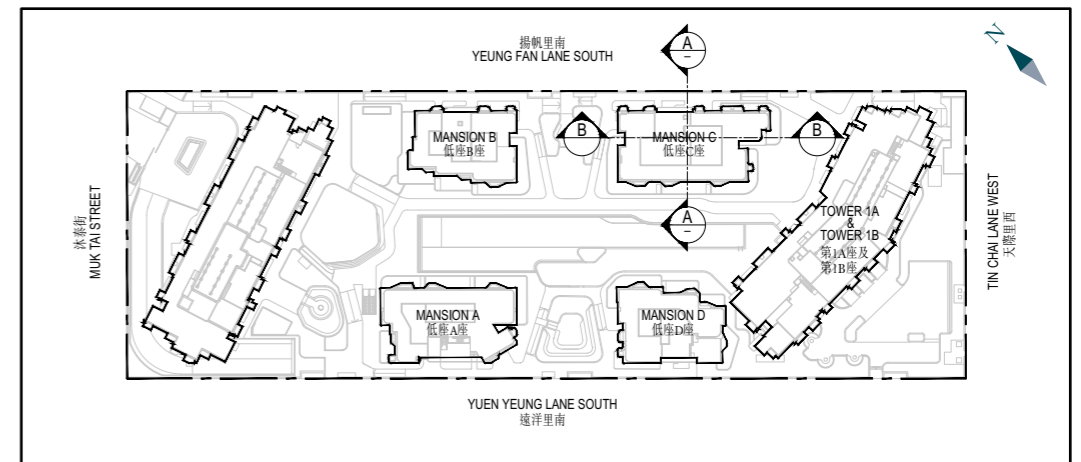
MANSION C - CROSS-SECTION PLAN A-A

低座C座 - 橫截面圖A-A



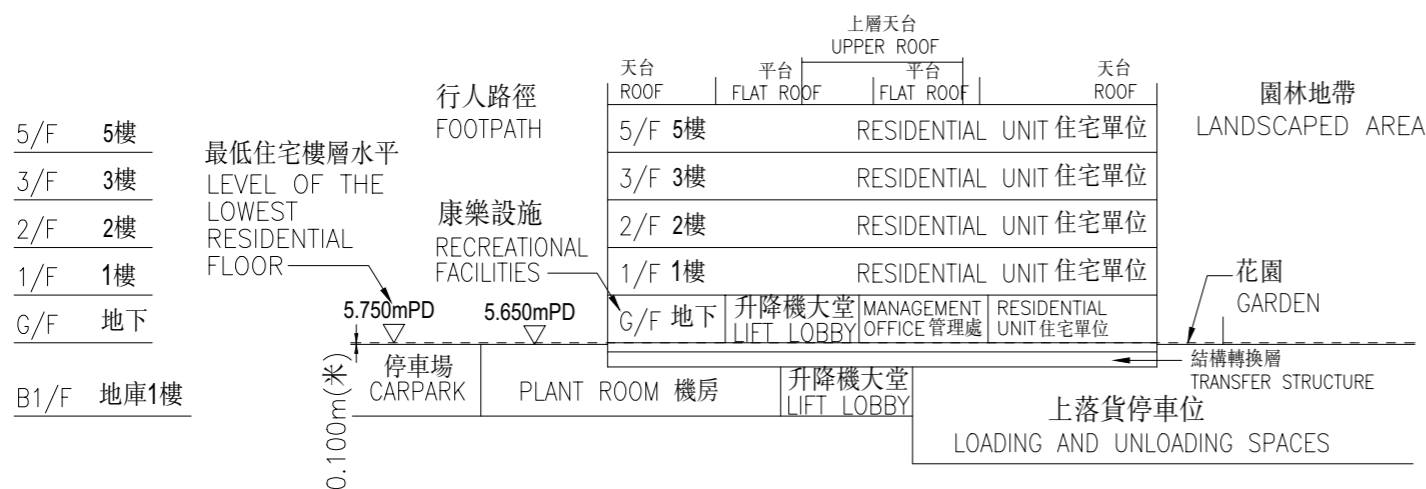
KEY PLAN

索引圖



MANSION C - CROSS-SECTION PLAN B-B

低座C座 - 橫截面圖B-B



▽ Height in metres above the Hong Kong Principal Datum (HKPD).
香港主水平基準以上高度(米)。

----- Dotted line denotes the level of the lowest residential floor of the building.
虛線為該建築物最低住宅樓層水平。

Remark: This cross-section plan is not drawn to scale.
備註：此橫截面圖並非按照比例繪圖。

The part of Yeung Fan Lane South adjacent to Mansion C is 5.268 metres to 5.350 metres above the Hong Kong Principal Datum.

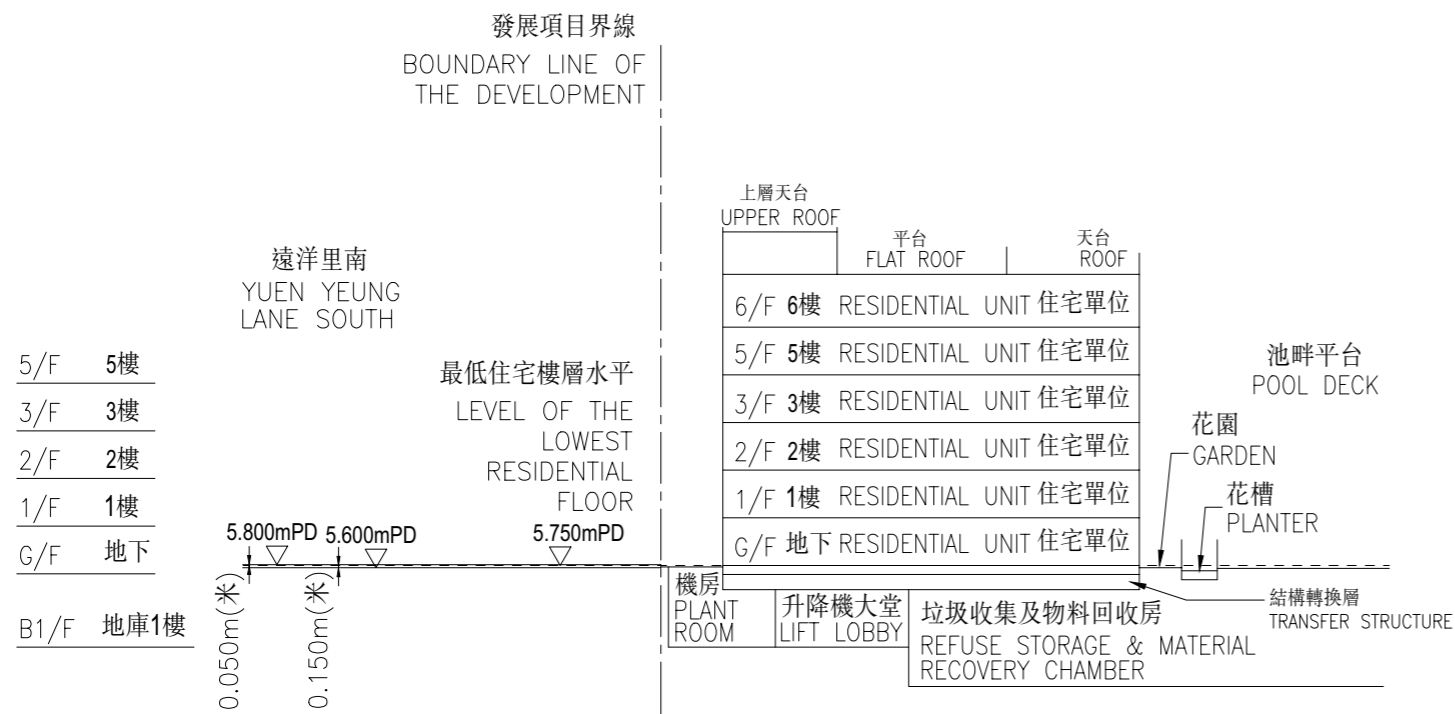
毗連低座C座的一段揚帆里南為香港主水平基準以上5.268米至5.350米。

The two parts of footpath adjacent to Mansion C are 5.450 metres and 5.650 metres above the Hong Kong Principal Datum respectively.

毗連低座C座的兩段行人路徑分別為香港主水平基準以上5.450米及5.650米。

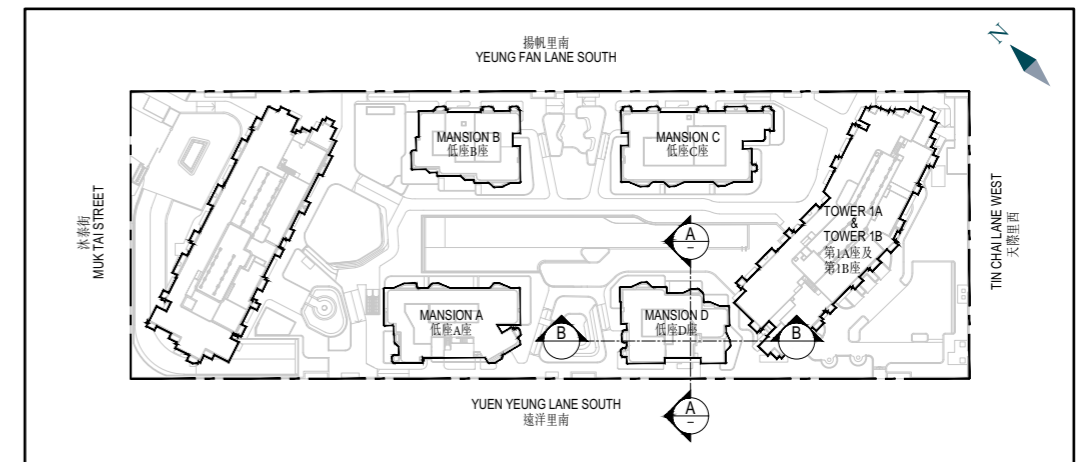
MANSION D - CROSS-SECTION PLAN A-A

低座D座 - 橫截面圖A-A



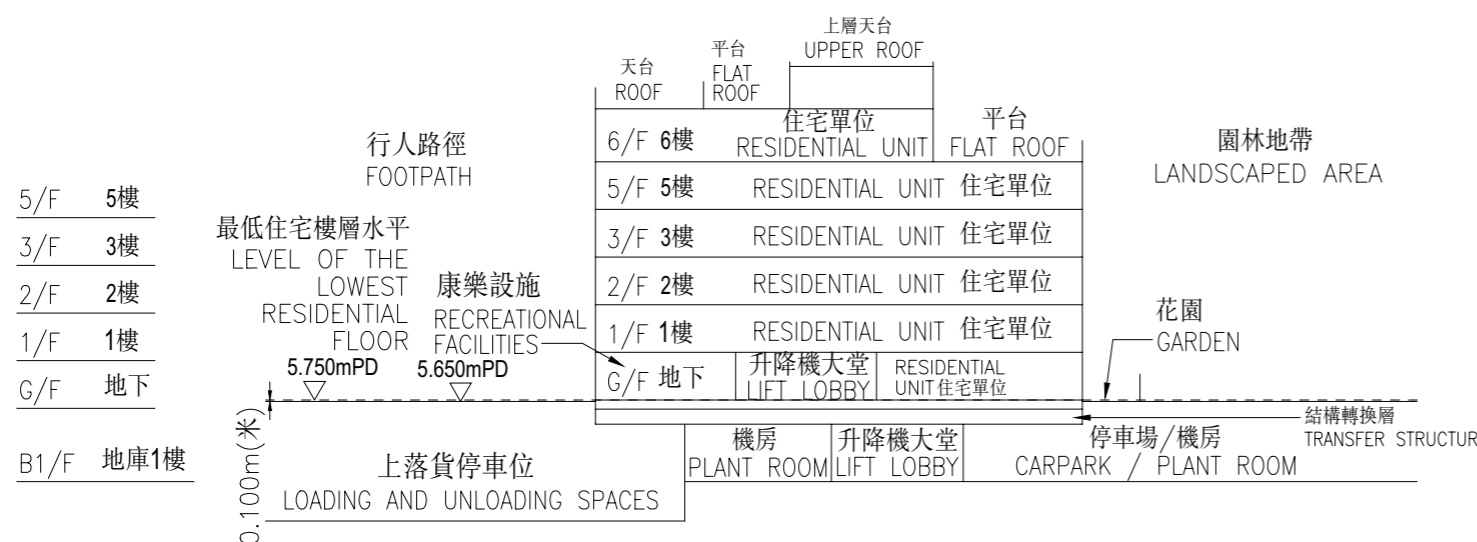
KEY PLAN

索引圖



MANSION D - CROSS-SECTION PLAN B-B

低座D座 - 橫截面圖B-B



▽ Height in metres above the Hong Kong Principal Datum (HKPD).
香港主水平基準以上高度(米)。

----- Dotted line denotes the level of the lowest residential floor of the building.
虛線為該建築物最低住宅樓層水平。

Remark: This cross-section plan is not drawn to scale.
備註：此橫截面圖並非按照比例繪圖。

The part of Yuen Yeung Lane South adjacent to Mansion D is 5.600 metres to 5.800 metres above the Hong Kong Principal Datum.

毗連低座D座的一段遠洋里南為香港主水平基準以上5.600米至5.800米。

The part of footpath adjacent to Mansion D is 5.650 metres above the Hong Kong Principal Datum.

毗連低座D座的一段行人路徑為香港主水平基準以上5.650米。