

10 期數的住宅物業的樓面平面圖

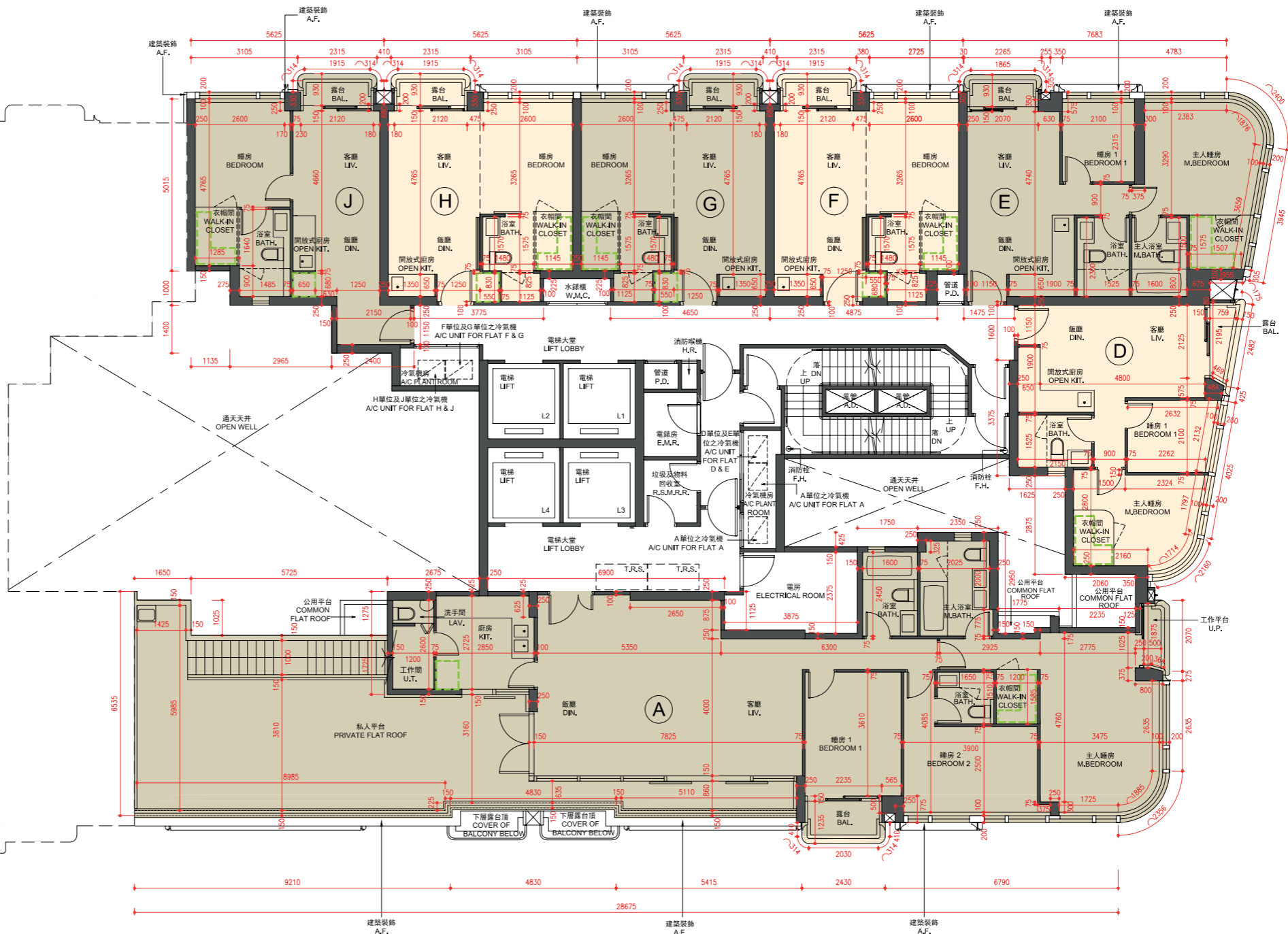
FLOOR PLANS OF RESIDENTIAL PROPERTIES IN THE PHASE

第1座 TOWER 1

40樓
40/F



發展項目第1期
PHASE 1 OF
THE DEVELOPMENT



備註：平面圖所列數字為以毫米標示之建築結構尺寸。
Note: The dimensions of floor plans are all structural dimensions in millimeter.

比例尺 Scale 0米(m) 5米(m)

10 期數的住宅物業的樓面平面圖

FLOOR PLANS OF RESIDENTIAL PROPERTIES IN THE PHASE

每個住宅物業 Each Residential Property	樓層 FLOOR	第1座 TOWER 1						
		單位 FLAT						
		A	D	E	F	G	H	J
樓板(不包括灰泥)的厚度(毫米) Thickness of Floor Slab (excluding plaster) (mm)	40樓 40/F	150, 175, 450#, 475#	150, 300 [^] , 450#	150, 250 [~] , 300 [^] , 450#	150, 250 [~] , 450#	150, 250 [~] , 450#	150, 250 [~] , 300 [^] , 450#	150, 300 [^]
層與層之間的高度(毫米) Floor-to-Floor Height (mm)		3500, 3800#	3500, 3650 [^] , 3800#	3500, 3600 [~] , 3650 [^] , 3800#	3500, 3600 [~] , 3800#	3500, 3600 [~] , 3800#	3500, 3600 [~] , 3650 [^] , 3800#	3500, 3650 [^]

因住宅物業的較高樓層的結構牆的厚度遞減，較高樓層的內部面積，一般比較低樓層的內部面積稍大。

The internal areas of the residential properties on the upper floors will generally be slightly larger than those on the lower floors because of the reducing thickness of the structural walls on the upper floors.

請參閱本售樓說明書第35頁為住宅物業的樓面平面圖而設之備註和圖例。

Please refer to page 35 of this sales brochure for the remarks and legends for the floor plans of residential properties.

~包括結構層上之混凝土填充層厚度(100毫米)

~Inclusive of the thickness of mass concrete fill on slab (100mm)

^包括結構層上之混凝土填充層厚度(150毫米)

^Inclusive of the thickness of mass concrete fill on slab (150mm)

#包括結構層上之混凝土填充層厚度(300毫米)

#Inclusive of the thickness of mass concrete fill on slab (300mm)

10 期數的住宅物業的樓面平面圖

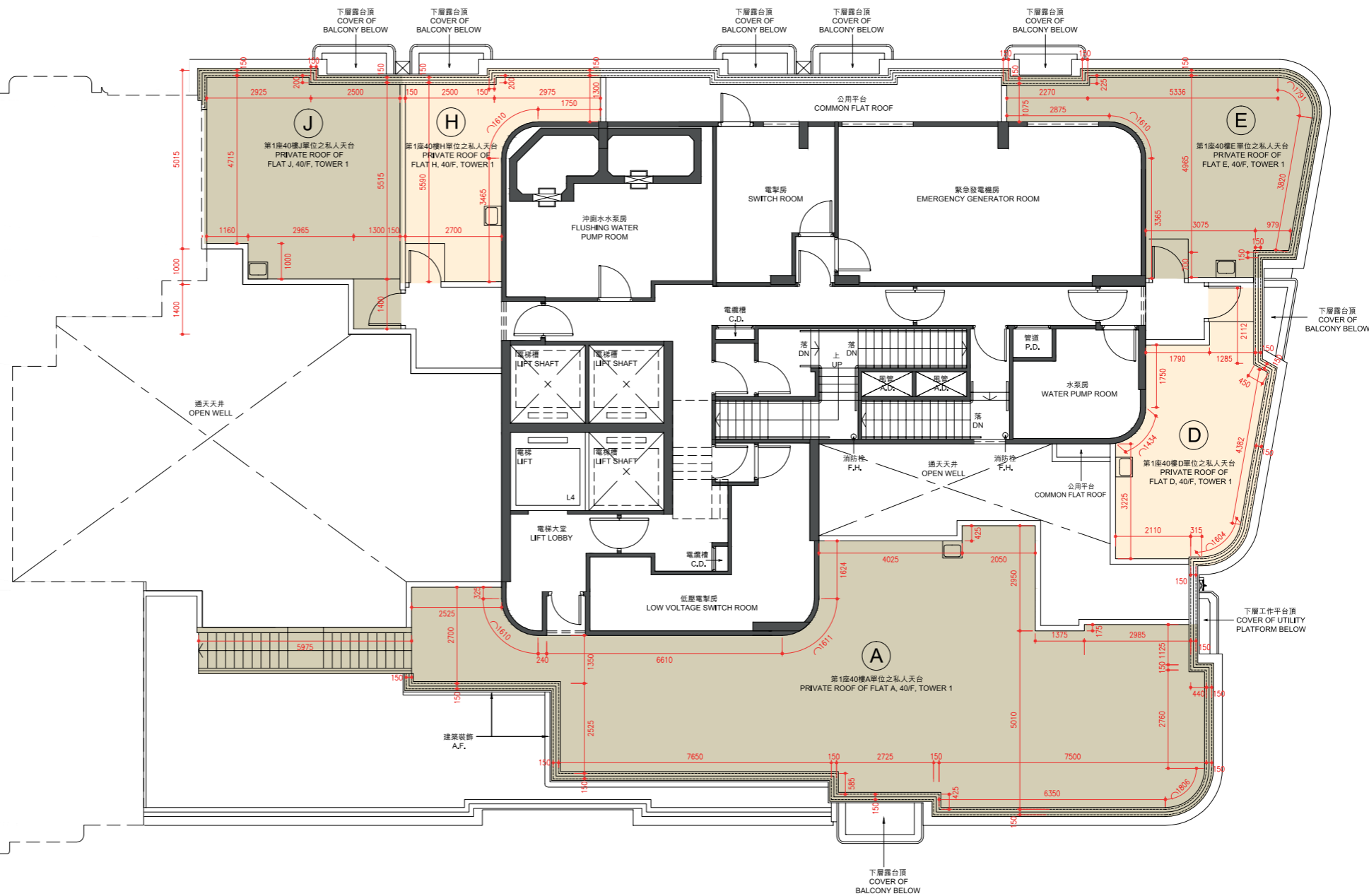
FLOOR PLANS OF RESIDENTIAL PROPERTIES IN THE PHASE

第1座 TOWER 1

天台
Roof



發展項目第1期
PHASE 1 OF
THE DEVELOPMENT



備註：平面圖所列數字為以毫米標示之建築結構尺寸。
Note: The dimensions of floor plans are all structural dimensions in millimeter.

比例尺 Scale 0米(m) 5米(m)

10 期數的住宅物業的樓面平面圖

FLOOR PLANS OF RESIDENTIAL PROPERTIES IN THE PHASE

每個住宅物業 Each Residential Property	樓層 FLOOR	第1座 TOWER 1				
		單位 FLAT				
		A	D	E	H	J
樓板(不包括灰泥)的厚度(毫米) Thickness of Floor Slab (excluding plaster) (mm)	天台 Roof	不適用 Not Applicable	不適用 Not Applicable	不適用 Not Applicable	不適用 Not Applicable	不適用 Not Applicable
層與層之間的高度(毫米) Floor-to-Floor Height (mm)		不適用 Not Applicable	不適用 Not Applicable	不適用 Not Applicable	不適用 Not Applicable	不適用 Not Applicable

因住宅物業的較高樓層的結構牆的厚度遞減，較高樓層的內部面積，一般比較低樓層的內部面積稍大。

The internal areas of the residential properties on the upper floors will generally be slightly larger than those on the lower floors because of the reducing thickness of the structural walls on the upper floors.

請參閱本售樓說明書第35頁為住宅物業的樓面平面圖而設之備註和圖例。

Please refer to page 35 of this sales brochure for the remarks and legends for the floor plans of residential properties.