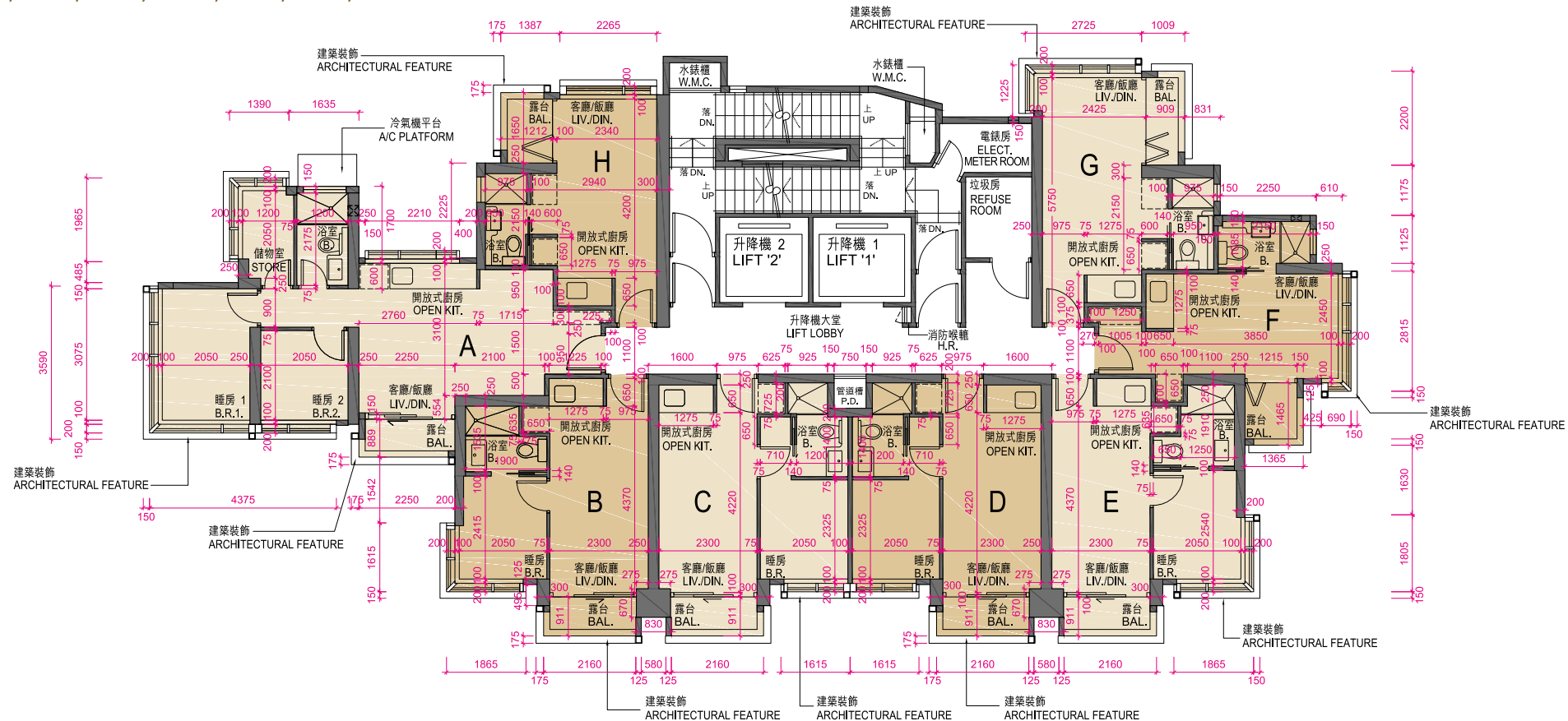


10. 發展項目的住宅物業的樓面平面圖 FLOOR PLANS OF RESIDENTIAL PROPERTIES IN THE DEVELOPMENT

10樓、12樓、16樓、18樓、20樓、22樓、25樓、27樓、29樓及31樓平面圖
10th, 12th, 16th, 18th, 20th, 22nd, 25th, 27th, 29th & 31st FLOOR PLAN



Scale 比例: 0 1 2 3 4 5米

每個住宅物業 Each Residential Property	樓層 Floor	單位 Flat							
		A	B	C	D	E	F	G	H
層與層之間的高度(毫米) Floor-to-Floor Height (mm)	10樓、12樓、16樓、18樓、 20樓、22樓、25樓、 27樓、29樓及31樓 10/F, 12/F, 16/F, 18/F, 20/F, 22/F, 25/F, 27/F, 29/F & 31/F	3500	3500	3500	3500	3500	3500	3500	3500
樓板(不包括灰泥)的厚度(毫米) Thickness of Floor Slab (excluding plaster) (mm)	10樓、12樓、16樓、 18樓、20樓、22樓、 25樓、27樓及29樓 10/F, 12/F, 16/F, 18/F, 20/F, 22/F, 25/F, 27/F & 29/F	160	160	160	160	160	160	160	160
	31樓 31/F	150, 175	150, 175	175	175	150	150	150	150, 175

因住宅物業的較高樓層的結構牆的厚度遞減，較高樓層的內部面積，一般比較低樓層的內部面積稍大。

The internal areas of the residential properties on the upper floors will generally be slightly larger than those on the lower floors because of the reducing thickness of the structural walls on the upper floors.

請參閱本售樓說明書第17頁為住宅物業樓面平面圖而設之備註的圖例。

Please refer to page 17 of this sales brochure for the notes and legends of the terms and abbreviations for the floor plans of residential properties.

備註：平面圖所列之數字為以毫米標示之建築結構尺寸。
Notes: The dimensions in floor plans are all structural dimensions in millimeter.